

Capturing in Final Cut Pro from a Tape Deck

1. Make sure the deck is in “LOCAL” mode and insert your tape.

You can search the tape using the Rewind, Play, and Fast Forward buttons beneath the LED screen. You don't have to get the media perfectly cued up. You'll get the chance again later to get to exactly where you want.

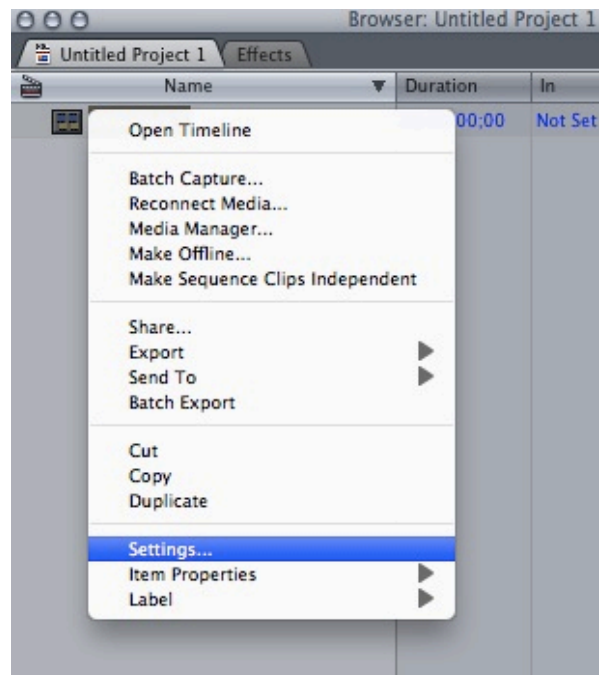


2. Launch Final Cut Pro and set your scratch disks.

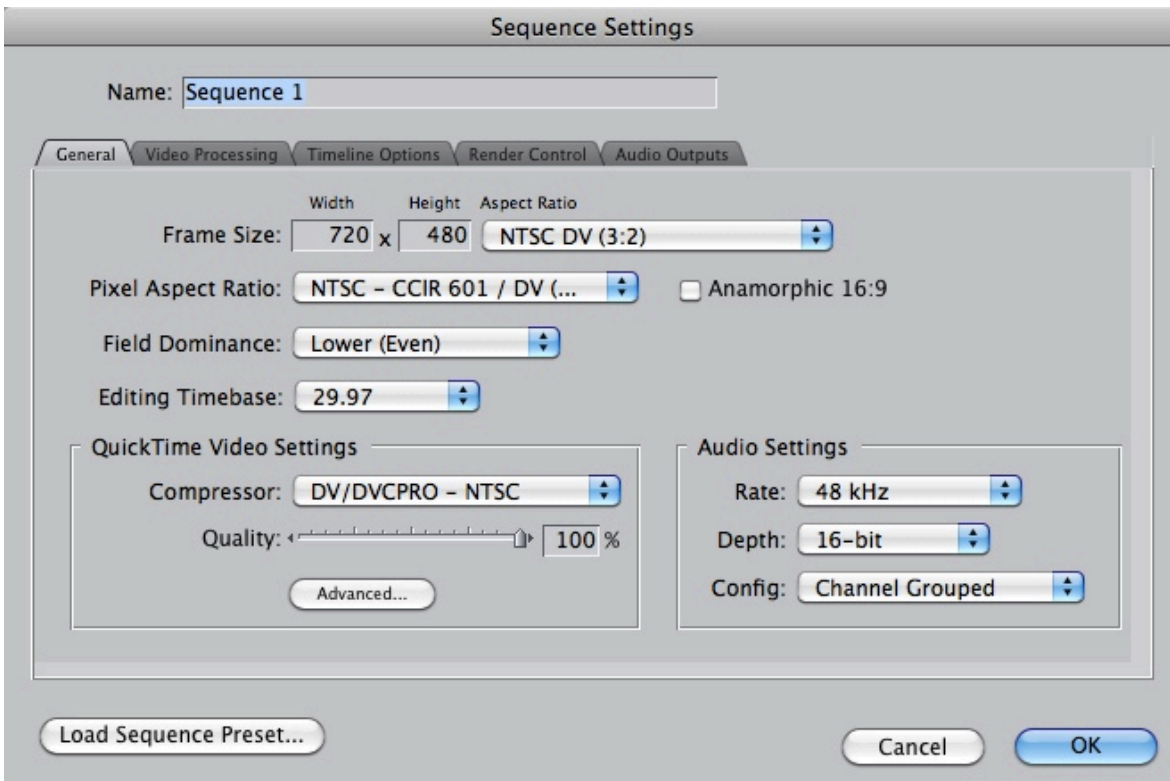
For more on setting scratch disks, see the [Setting Scratch Disks in Final Cut Pro](#) tutorial.



3. Check that the sequence's settings are correct for your project.



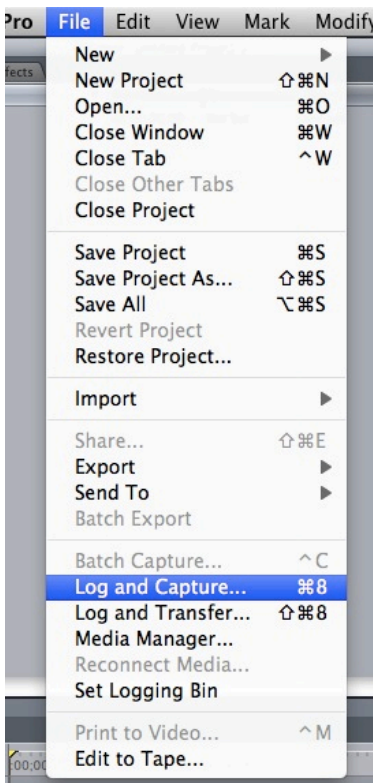
These are the correct settings for a 4:3 (fullscreen) standard definition project. Check the “Anamorphic 16:9” box if your project is 16:9 widescreen.



4. Switch the deck into “REMOTE” mode.

5. Enter Final Cut’s “LOG AND CAPTURE” interface.

⌘8 is the keyboard shortcut to launch this window.



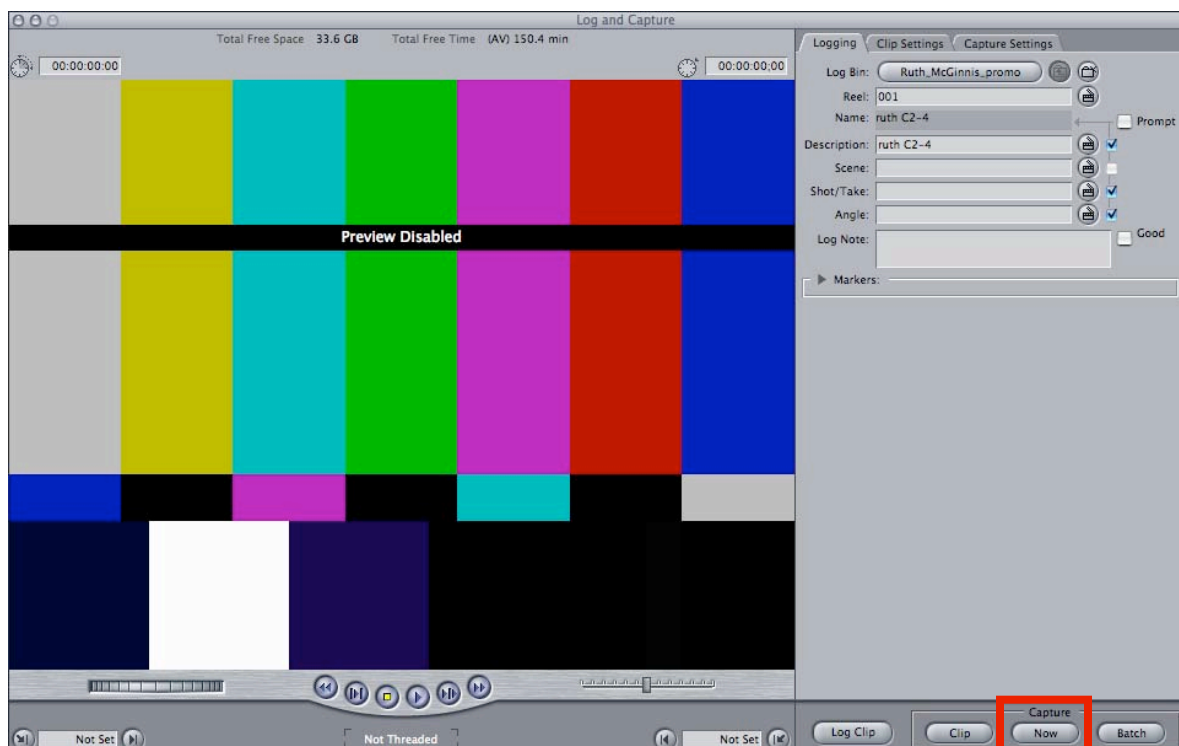
6. Use the controls to find exactly where you’d like to begin capturing.

You can use the ← → keys to search frame by frame.





Use this space to name your capture. This will be how the clip is named both in Final Cut and on your scratch disk. Be specific.



7. Hit "NOW" to begin capturing. Pressing the ESC key will end the capture.

Things to keep in mind:

- ▶ The deck must be in "LOCAL" mode to eject your tape when you're done.
- ▶ Capture files are about 12 GB/hour. Be sure you have enough space on your scratch disk before you begin.
- ▶ If Final Cut is not recognizing the deck, make sure that it's connected to the computer!
- ▶ Power off the deck when you're finished.
- ▶ If you're working on EIV-owned drives or the server, make sure you're working within and maintaining the existing file structure.
- ▶ No data or media can be saved on EIV workstations. Misplaced media is subject to deletion.